



# Sonic Impact T-amp TweaKit™

revision 052107

You need to understand all the steps you will be taking *before* you begin. Please read these instructions all the way through before beginning work. (A small amount of time now will make your work faster, better and more enjoyable!)

## Recommended Tools

- Soldering iron- fine tip
- Large soldering iron for speaker posts (Or just solder to tabs)
- Wire strippers
- Small wire cutters (Flush-cut type)
- Tweezers or very fine needle nose pliers.
- Files
- Solder wick
- Desoldering iron
- Scissors
- Magnifying glasses
- Voltmeter
- Small screwdrivers

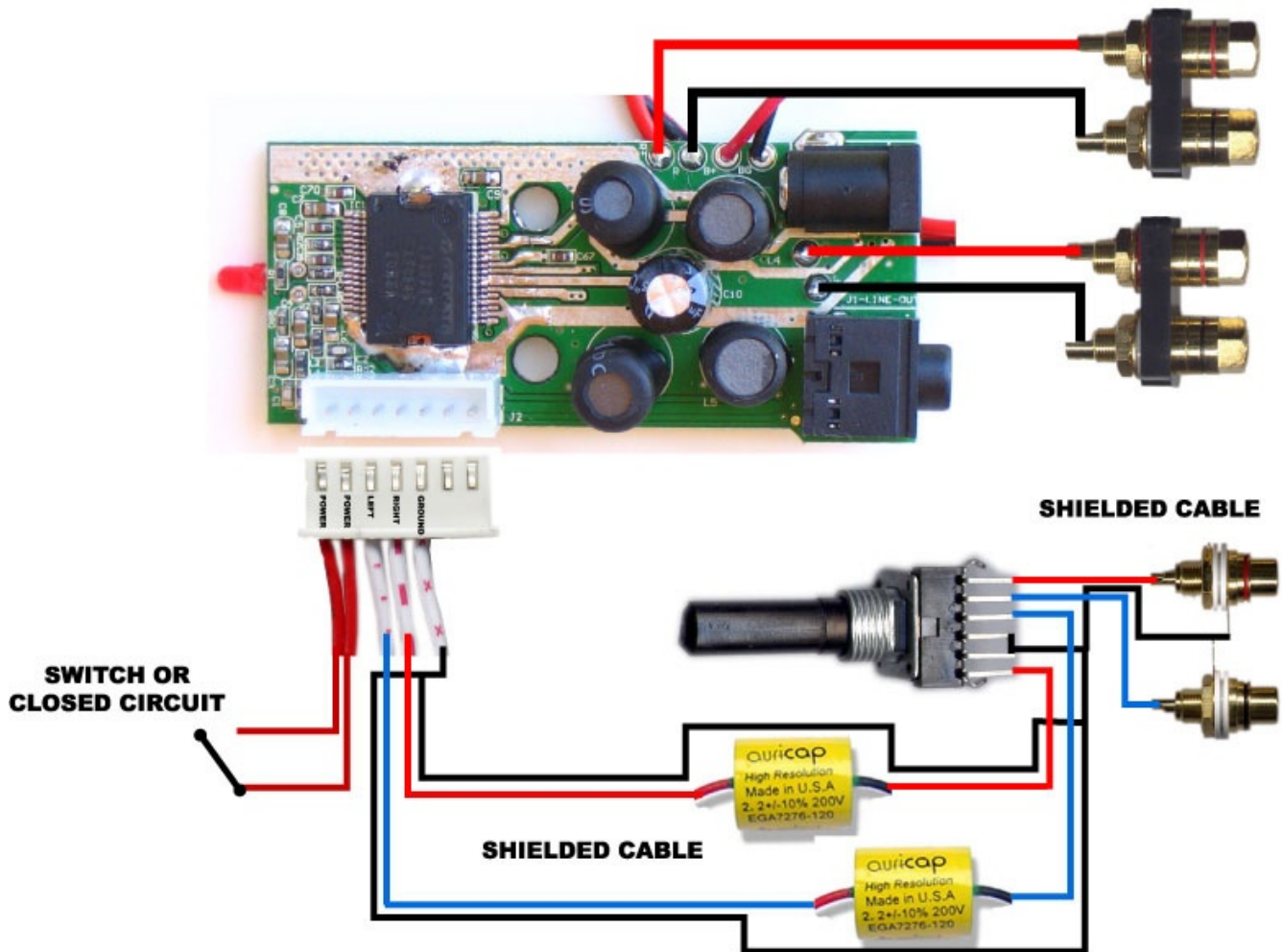
## Parts

(Please check your package for all parts before beginning)

Quantity	Part	Description
2 ea	Input Caps	Auricap 2.2uF 200V
1 ea	Power Cap	Panasonic FM Series 1200uF 16V
1 ea	Stiffener Cap	Panasonic FM series 2700uF 16V or Nichicon 10,000uF 25V (Ultra)
2 ea	Input Wire	Mogami 2368 Console Cable
1 ea	Heatsink	100% Copper with Adhesive Base
1 ea	Solder	WBT 4% Silver Solder
1ea	Replacement Pot	Panasonic EVJ
1 pr	RCA Connectors	Connex Tiffany Gold Plated or Vampire CMHEX
2 pr	Speaker Binding Posts	Dayton Gold Binding Posts or Vampire BPHEX (Ultra)

# Sonic Impact T-amp

Figure 1. Mod Layout



## 1. Open SI

- 1.1. Remove rubber feet
- 1.2. Remove screws
- 1.3. Open battery compartment
- 1.4. Remove screws

## 2. Remove amp

- 2.1. Cut wires near pot. Then cut in middle  
**Ignore step 2.1 if using SI pot**
- 2.2. Cut power wires long
- 2.3. Cut speaker wires

### 3. See mod-layout

3.1. Remove, replace electrolytic cap

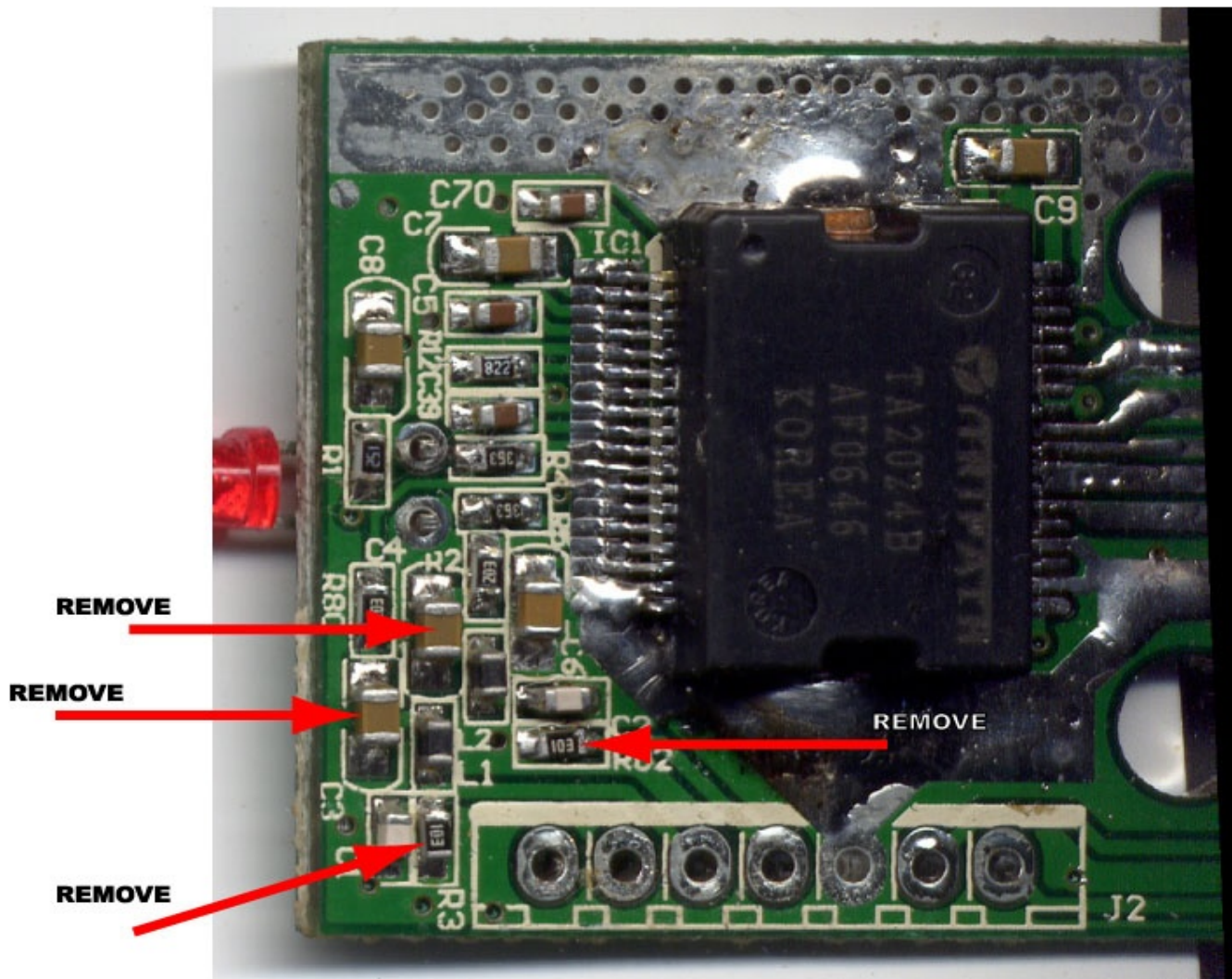
Do NOT remove coils or socket on board. Shown for clarity only!

3.2. Remove the following (See Figure 2):

- C3
- C4
- R3
- R02

Heat each end with iron, then flick off the board.

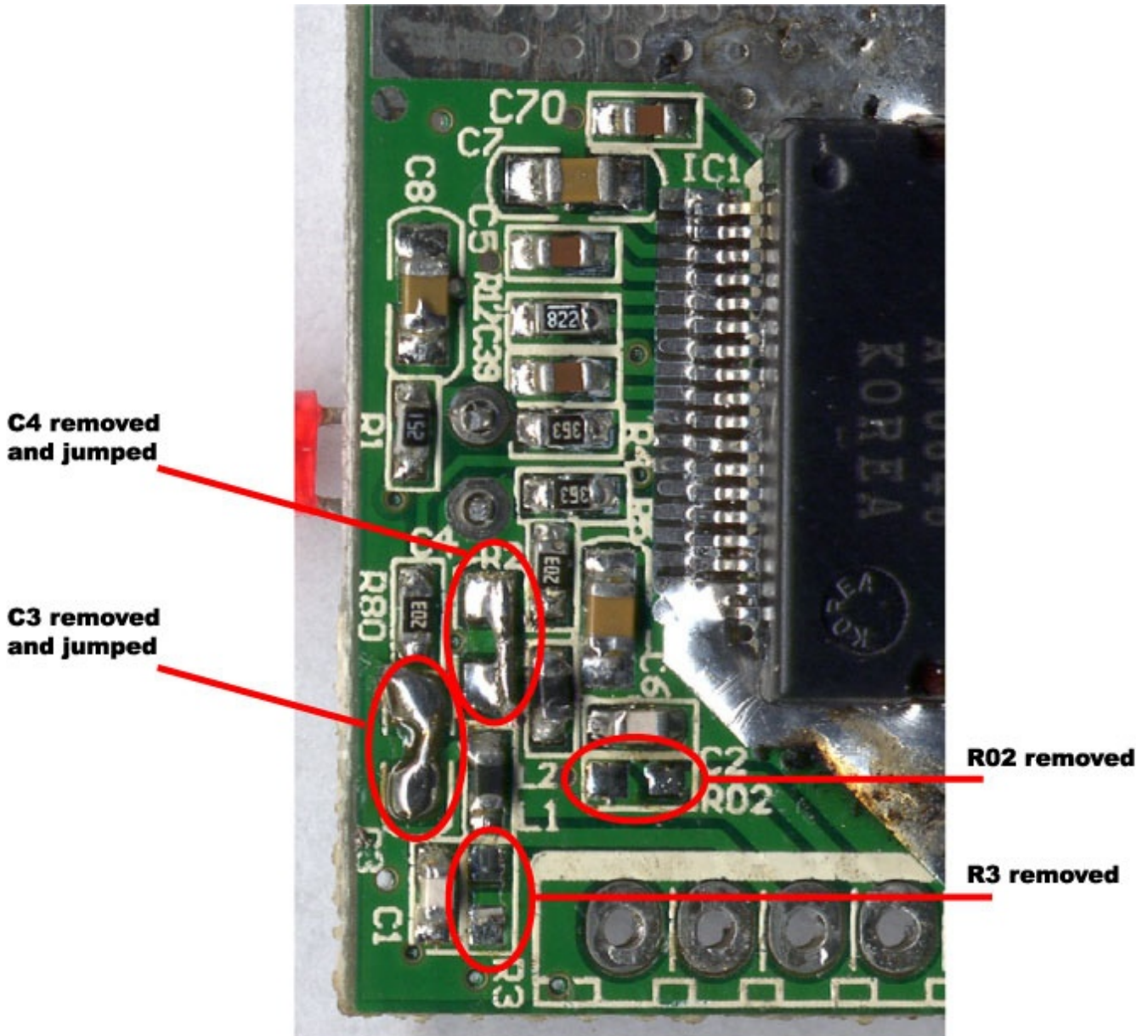
Figure 2. Remove these surface-mount components



**4. Bridge C3, C4 with small bit wire as jumper**

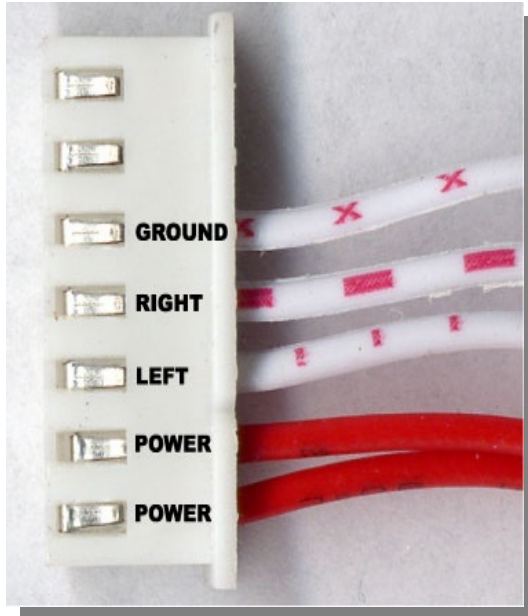
This is hardest part. Bend wire into L shape - hold with tweezers. Cut top of L after soldering.

Figure 3. Jumpers added



**5. Remove 2 right most wires on plug**  
(shown after removal at top of photo)

Figure 4. Wires on plug



**6. Install parts:**

- 6.1. Connect auricaps and ground to plug (see mod-layout) with mogami
- 6.2. Connect auricaps to pot via mogami (mod-layout)
- 6.3. Connect pot to RCAs via mogami (mod-layout)
- 6.4. Connect outputs to speaker posts (mod-layout)
- 6.5. Use small RFI suppression caps from stock speaker posts on new posts.
- 6.7. Use ferrite ring if wanted for RFI reduction. Loop as in stock amp.
- 6.8. Connect switch to red wires from plug. Or solder together for permanent on.
- 6.9. Solder tank cap (if supplied) to power wires. + terminal to red, - to black. Fit wherever you can.

**7. You're done! Enjoy**

**Double check all wiring and polarities before applying power**